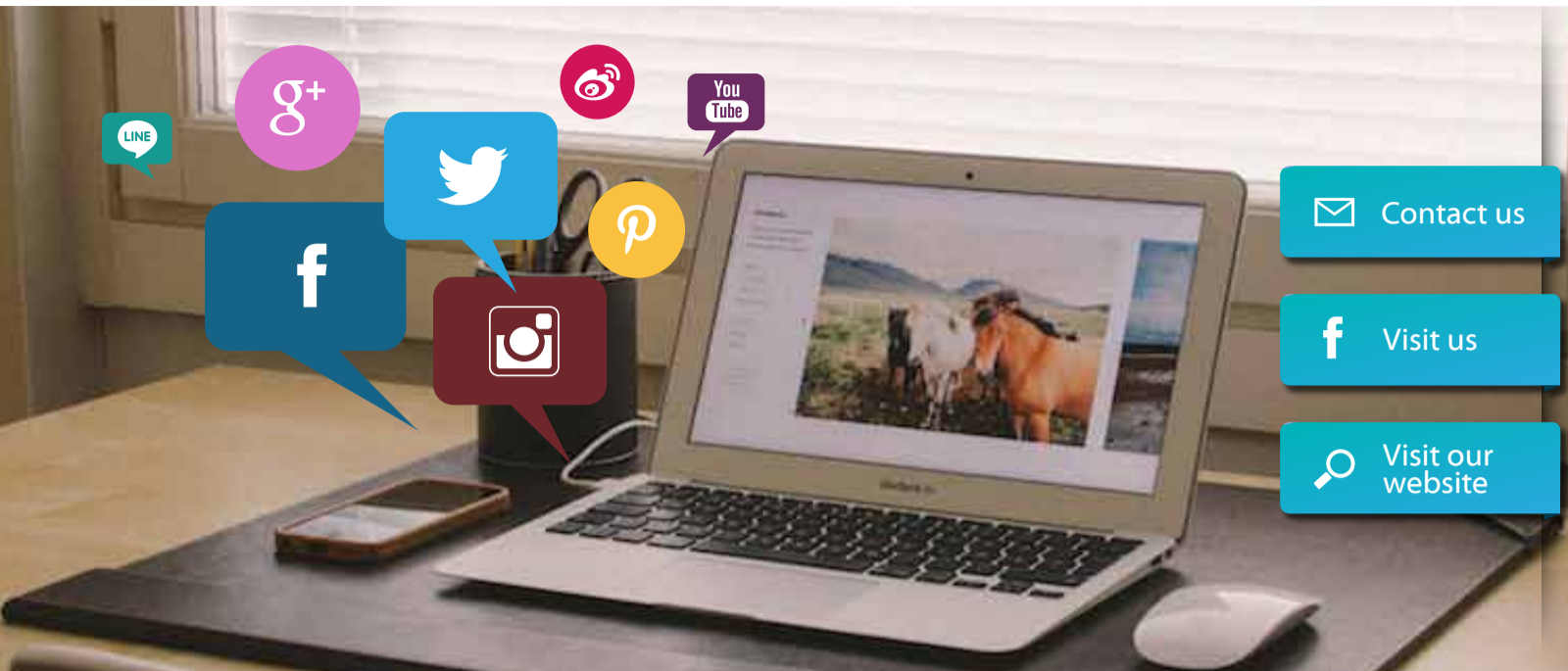


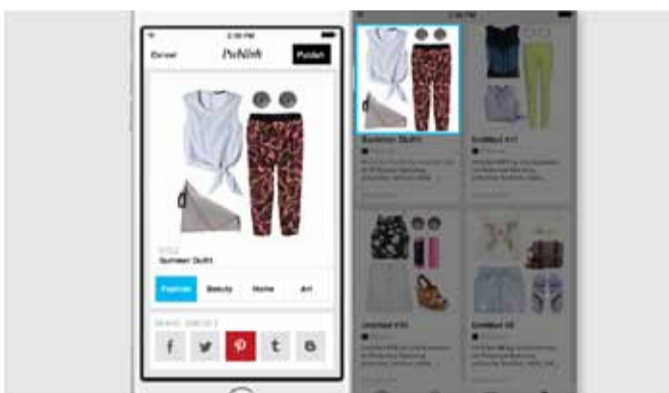


# Klarity

The Analytical Tool for Serious Marketers



## THIS WEEK'S TOP STORIES ON SOCIAL MEDIA



"Sign up now or Login with your Facebook Account" - Look familiar? You can now do the same thing with your Pinterest account. With this, users can easily Pin collections and offer some new ways to pin images. Right now this feature is only available on two apps, but as Pinterest said, its early tests have shown that

this integration increases shares to Pinterest boards by 132 percent. We can expect more apps will open up with this feature to nurture our Pinterest obsession. [View More](#)



Your Facebook's News Feed is like a billboard of your life and for years, it has been powered by automated software that tracks your actions to show you the posts you will most likely engage with, or as Facebook's FAQ said, "the posts you will find

interesting". But now you can say goodbye to guesswork. Facebook has created a new function called "See First". Simply add the Pages, friends or public figures' profiles to your See First list and it will revamp your News Feed Preferences. Getting added to that list guarantees all their posts will appear at the top of a user's News Feed with a blue star. [View More](#)



Youku Tudou, which has been described as China's answer to YouTube and boasts 185 million unique users per month, will air its first foreign TV series approved under new rules from China's media regulator, SAP-PRFT. The Korean romantic comedy entitled "Hyde, Jekyll, and Me" will be available this weekend. With

Youku's mobile app users each spending on average 648 minutes browsing on what's new, this TV show is sure to be a hit. [View More](#)

Sources:

<http://www.engadget.com/2015/07/09/pinterest-ifttt-polyvore-integration/>

[http://www.huffingtonpost.com/entry/facebook-update-news-feed\\_559ea560e4b05b1d028fdde9](http://www.huffingtonpost.com/entry/facebook-update-news-feed_559ea560e4b05b1d028fdde9)

<http://www.thevideoink.com/news/youku-tudou-airs-first-foreign-show-china-still-tough-streaming/#.VaTScPmqkko>

Copyright 2015 © Social Media Broadcasts (SMB) Limited. All rights reserved.